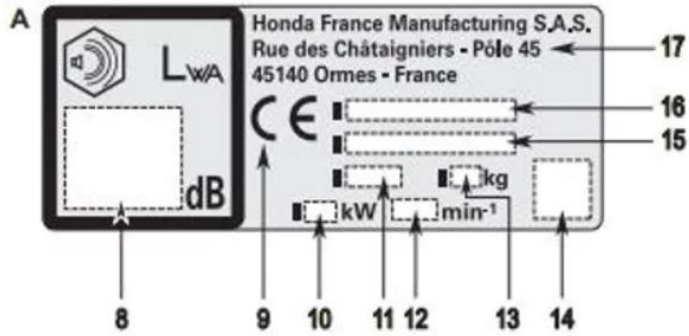


### What does the identification plate look like?

If your mower was made after 1997 it is most likely to have 11 characters, which will look like M\_ \_ \_ -XXXXXXX.

Honda serial numbers are normally printed on black and silver labels. If your lawnmower is provided with a Honda engine, the model and serial number may be found under the housing or on the right side of the engine.



#### A. IDENTIFICATION OF THE MACHINE

8. Sound power level
9. CE marking
10. Nominal power
11. Year of manufacture
12. Eng speed
13. Mass
14. QR code
15. Serial number
16. Model type
17. Name and address of the manufacturer

There are a variety of Honda mowers such as HR, HRA, HRB, HRD, HRE, HRF, HRG, HRH, HRM, HRS, HRX and HRZ, that range from different years and models. Therefore the location of the decal will vary depending on these factors.